

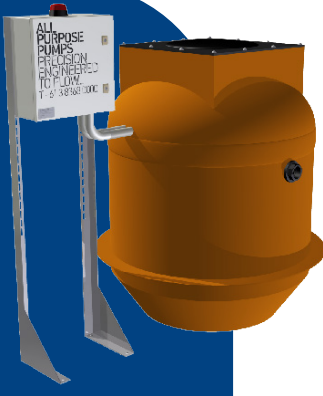
# PACKAGE PUMP STATIONS

## ABOVE GROUND PUMP STATIONS

### FIBREGLASS

The FRP (Fibreglass) pump stations are structurally engineered to handle the toughest conditions. The single piece light weight pump station is available in all standard sizes in addition to any custom size. Available in single and multiple pump options.

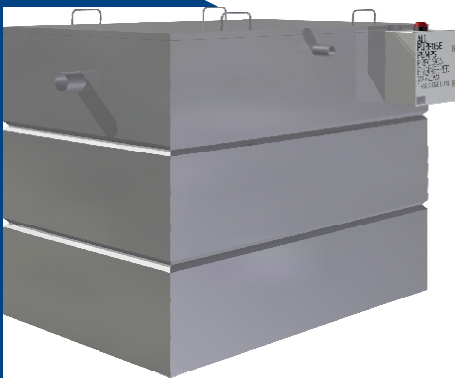
- > Pump Configuration;
  - > Free standing pumps consist of heavy duty bronze non return valves, isolation valve, flexible hose c/w quick connect cam-lock couplings and s/s hose clamps
  - > Auto coupling pumps consist of internally fixed discharge pipework, heavy duty non return valves, isolation valves, support bracketing, galvanised guide rails and top guide brackets
- > Pump lifting chain sets
- > Stainless steel chain and float mounting hooks
- > Level control float set consisting on the reliable HDFS style floats
- > Covers to suit the application
- > Controller pre-wired for easy of installation on site
- > Supplied tested and commissioned



### STAINLESS STEEL

The Stainless Steel pump stations are designed and built to provide the highest degree of reliability. Available in 304 and 316, and built to any size. Available in single and multiple pump options.

- > Pump Configuration;
  - > Free standing pumps consist of heavy duty bronze non return valves, isolation valve, flexible hose c/w quick connect cam-lock couplings and s/s hose clamps
  - > Auto coupling pumps consist of internally fixed discharge pipework, heavy duty non return valves, isolation valves, support bracketing, galvanised guide rails and top guide brackets
- > Pump lifting chain sets
- > Stainless steel chain and float mounting hooks
- > Level transducer
- > Gas tight hinged access covers with gas lifting struts
- > Controller pre-wired for easy of installation on site
- > Supplied tested and commissioned



### POLYPROPYLENE

The Polypropylene pump stations are a single piece construction available in many sizes. Available in single and multiple pump options.

- > Pump Configuration;
  - > Free standing pumps consist of heavy duty bronze non return valves, isolation valve, flexible hose c/w quick connect cam-lock couplings and s/s hose clamps
  - > Auto coupling pumps consist of internally fixed discharge pipework, heavy duty non return valves, isolation valves, support bracketing, galvanised guide rails and top guide brackets
- > Pump lifting chain sets
- > Stainless steel chain and float mounting hooks
- > Level control float set consisting on the reliable HDFS style floats
- > Gas tight screwed access cover
- > Controller pre-wired for easy of installation on site
- > Supplied tested and commissioned

