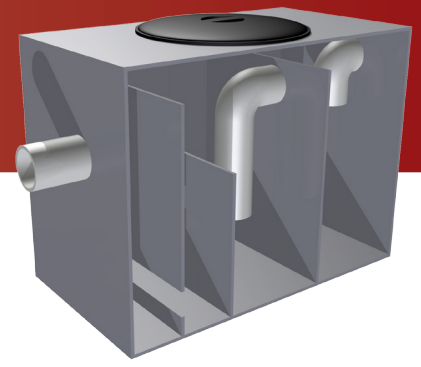


# TRADEWASTE PAINT SETTLING TANK



## FEATURES

The All Purpose Pumps Paint Settling tanks are specifically designed with a strategic internal baffle set up to remove water-borne contaminants of acrylic and mineral based paints before the tradewaste passes to sewer.

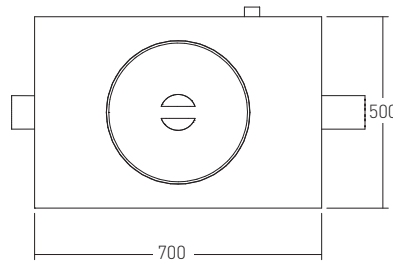
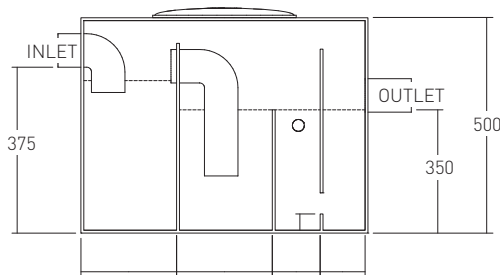
## RANGE

PRODUCT CODE		INLET / OUTLET
ABOVE GROUND	BELOW GROUND	
860076	860112	100mm



**30 YEARS** INDUSTRY EXPERIENCE

## DIMENSIONS



### NOTES

1. External dimensions
2. Tanks can be made to any size
3. Cover options available for Above & Below ground tanks
4. All Dimensions are in mm and are approximate

