



COMPONENTS PREMIUM WATER BOOSTER CONTROLLER

FEATURES

The variable speed Premium Water Booster pump controller is one of the most versatile, advanced and easy to use units in the industry, for the monitoring and control of up to six pumps. These controllers minimize energy consumption and costs by regulating the pump speed to match the duty required.

The intuitive graphical colour touch screen is so smart yet extremely simple to use. With everything in one location programming, servicing and system reviews are easy and uncomplicated to perform.

Remote monitoring and complete management of the entire pump system and controller is simple and easy to access, giving the owner and managers total control.

MANUFACTURING STANDARDS:

The All Purpose Pumps controllers are manufactured with ISO quality control and comply with the following standards;

- > 'AS / NZS 3000:2007' Electrical installations wiring rules (and relevant referenced standards)
- > 'AS 1939 1990' Degrees of protection for electrical equipment
- > 'AS 3439.1 2002' Low-voltage switchgear and control gear assemblies



30 YEARS INDUSTRY EXPERIENCE

CONSTANT PRESSURE PUMP CONTROL

- > Powder coated steel lockable IP56 weather resistant enclosure
- > Robust backlit HMI operator interface with full colour touch screen mounted on external door
- > Removable cable gland plate
- > Lockable mains power supply isolator switch
- > Safety 24 volt low voltage control circuit
- > Forced cabinet ventilation with thermostatically controlled fan and vents
- > Pump motor protection circuit breakers
- > Control protection circuit breaker
- > Pump motor latching thermal overload protection with manual reset
- > System low pressure shut-down protection
- > System high pressure shut-down protection
- > System loss of prime detection and shut-down protection.
- > Variable speed drive inverter unit for each pump motor.
- > Automatic pump duty alternation.
- > Progressive staged pump operation.
- > Automatic duty pump fault changeover.
- > Pump anti-seize protection start cycle timer.
- > Graphical operator display for:
 - > power on
 - > auto/off/manual selection for each pump with 0-100% speed adjustment in manual
 - > speed display for each pump
 - > run status for each pump
 - > fault status for each pump
 - > hours run log for each pump
 - > continuous live system operating pressure analogue and digital display
 - > event and trend data logging with description, time and date stamp
 - > graphical system pressure and pump speed over time display
 - > supply tank continuous live level display and/or low level cut out protection
 - > supply tank low level input and cut out protection
- > high level fault
- > service overview screen displaying:
 - > motor speed
 - > motor current draw
 - > variable speed drive temperature
 - > pressure set point
 - > live system operating pressure
 - > kilowatt/hour energy consumption check meter
- > Voltage free alarm outputs for BMS connection for:
 - > pump and system fault
 - > low level fault
 - > low pressure fault
 - > high pressure fault
- > EMC brass pump motor cable gland cabinet entry points.
- > EMC / V50 multicore screened pump motor cable

FEATURES



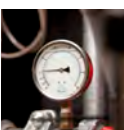
INDUSTRY STANDARD VSD'S

A major advantage for water authorities, industry and building facility managers with unlimited flexibility for future serving and support.



LARGE COLOUR TOUCH SCREEN

The home screen provides a graphical colour representation of your system with an overview of many core elements.



OPERATIONAL EFFICIENCY

Progressive staged pump operation seamlessly matching supply with demand



EVENT & TREND LOGGING

Call up a graphical pressure-over-time trending display for history of actual pressure delivery to the piping network.



MOTOR PROTECTION

Constantly monitors and protects against poor power supply voltage, phase failure and over current.



PUMP PROTECTION

System is protected against over pressure, under pressure and dry running.





TYPICAL ARRANGEMENTS

240V	PRODUCT CODES		
	VARIABLE SPEED DRIVE SIZE		
	No. Pumps	0.75kW	1.5kW
1	520310	520311	520312
2	520313	520314	520315
3	520316	520317	520318
4	520319	520320	520321

415V	PRODUCT CODES			
	VARIABLE SPEED DRIVE SIZE			
	No. Pumps	0.75kW	1.5kW	2.2kW
1	520328	520329	520330	520331
2	520338	520339	520340	520341
3	520348	520349	520350	520351
4	520358	520359	520360	520361
5	520368	520369	520370	520371
6	520378	520379	520380	520381

415V	PRODUCT CODES				
	VARIABLE SPEED DRIVE SIZE				
	No. Pumps	5.5kW	7.5kW	11kW	15kW
1	520332	520333	520334	520335	*
2	520342	520343	520344	520345	*
3	520352	520353	520354	520355	*
4	520362	520363	520364	520365	*
5	520372	520373	520374	520375	*
6	520382	520383	520384	520385	*

NOTES

1. Pressure transducers are not included and must be sized according to system operating pressure
2. *Larger size controllers are available on request

ADDITIONAL OPTIONS

PRODUCT	DESCRIPTION	PRODUCT	DESCRIPTION
 PRESSURE TRANSDUCER	Pressure sensing device	 FILTER BLOCK	Provides warning for filter blockage. Reverts to mains water until reset NOTE 1. Rainwater/Mains water function must be activated
 DUAL GPO	For connection of ancillary equipment, 240v, 10Amp	 FIRST FLUSH DIVERSION	Closes a diversion valve during the first flush rainfall period
 LOW LEVEL CUT OUT	Turns pump/s off when supply tank is at low level via level float switch	 INTERNAL DOOR	For anti tamper and weather protection
 TANK LEVEL INDICATION/ CUT OUT	Provides infinity tank level display and/ or turns pump/s off at low level via level transducer	 REMOTE MONITORING & MANAGEMENT	Remotely manage your pump system via an inbuilt web-server allowing remote access for fault diagnostics, system overview and system parameter changes
 RAIN WATER / MAINS WATER BYPASS	For change over from rain water supply to mains water supply NOTE 1. 240v denied output (solenoid not included) 2. Choose either low level cut out or Tank Level Indication / Cutout		

