

COMPONENTS

COVERS SOLID: SINGLE PART

FEATURES

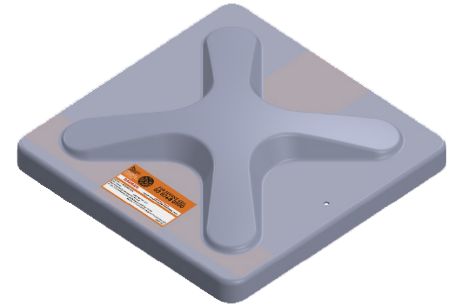
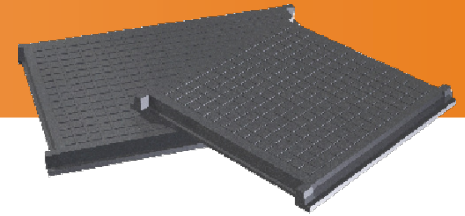
Single Part Gas Tight Covers are ideal for pump stations and pits in garden, pedestrian, driveway and trafficable areas. (trafficable areas include class B & D covers only)

FRP LID:

- > Fibreglass lid for light pedestrian loads
- > Gas tight lid sealing
- > Hinged design
- > Bolt type locking latch
- > Compliance to AS2634:1983 roof loading of 110kg over 100mm diameter area

CLASS B & D:

- > Cast Iron solid top cover and surround
- > Bolt type cover locking (2 x Allen Key)
- > Gas and water tight Solid Cover
- > Decorative edge: 12mm or 24mm raised Brass or Stainless Steel
- > Complies to AS3996



25 YEARS INDUSTRY EXPERIENCE

RANGE

FRP LID

MODEL NUMBER	PRODUCT CODE	WIDTH (W)	LENGTH (L)	DEPTH (D1)	DEPTH (D2)	WEIGHT
600 x 600	TBA	647	647	98	48	8kg

CLASS B: DESIGN LOAD 53 KN

MODEL NUMBER	PRODUCT CODE	WIDTH (W)	LENGTH (L)	DEPTH (D)	CLEAR OPENING		WEIGHT
					WIDTH (CW)	LENGTH (CL)	
300 x 300	580102	440	410	55	300	300	26 kg
450 x 450	580103	590	560	55	450	450	30 kg
600 x 475	580104	740	585	55	600	475	48 kg
600 x 600	580105	740	710	55	600	600	58 kg
600 x 775	580106	740	885	55	600	775	76 kg
750 x 450	580107	890	560	55	750	450	62 kg
750 x 600	580108	890	710	55	750	600	72 kg
750 x 750	580109	890	860	55	750	750	88 kg
900 x 450	580110	1040	560	55	900	450	74 kg
900 x 600	580111	1040	710	55	900	600	84 kg
915 x 762	580112	1055	872	55	915	762	97 kg
900 x 900	580113	1050	1010	55	900	900	123 kg
1200 x 600*	580114	1380	740	75	1200	600	186 kg

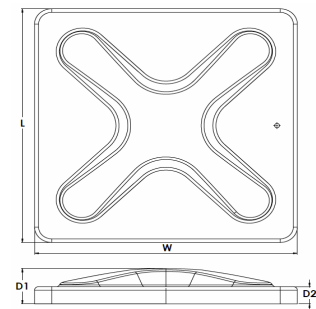
*NOTE 1. Decorative edge not available

CLASS D: DESIGN LOAD 140 KN

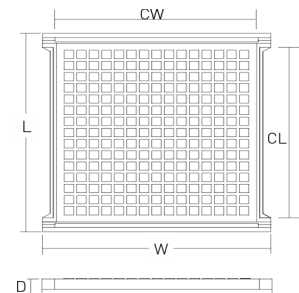
MODEL NUMBER	PRODUCT CODE	WIDTH (W)	LENGTH (L)	DEPTH (D)	CLEAR OPENING		WEIGHT
					WIDTH (CW)	LENGTH (CL)	
450 x 450	580173	662	662	100	450	450	84 kg
600 x 465	580174	812	677	100	600	465	100 kg
600 x 600	580175	812	812	100	600	600	115 kg
600 x 750	580176	812	962	100	600	750	142 kg
750 x 450	580177	962	662	100	750	450	120 kg
750 x 600	580178	962	812	100	750	600	138 kg
750 x 750	580179	962	962	100	750	750	155 kg
915 x 465	580180	1127	677	100	915	465	136 kg
915 x 600	580181	1127	812	100	915	600	155 kg
900 x 750	580182	1125	970	100	900	750	196 kg
900 x 900	580183	1115	1115	100	900	900	213 kg

NOTE 1. All dimensions are in mm and are approximate

DIMENSIONS- FRP



DIMENSIONS- CAST IRON

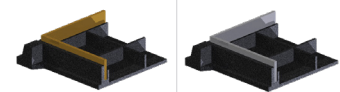


OPTIONS

DECORATIVE EDGE

BRASS

STAINLESS STEEL



Available Class B only 12 or 24mm depth

NOTE

1. Width and Length increase by 12mm

