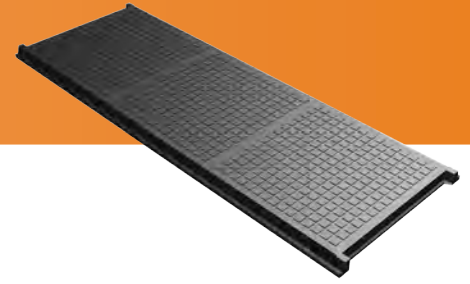


# COMPONENTS

## COVERS SOLID: THREE PART



### FEATURES

3 Part Multi Covers are ideal for pump stations and grease traps in pedestrian, driveway and trafficable areas.

#### CLASS B & D:

- > Cast Iron solid top cover and surround
- > Bolt type cover locking (2 x Allen Key)
- > Gas and water tight Solid Cover
- > Complies to AS3996

### RANGE

#### THREE PART CLASS B: DESIGN LOAD 53 KN

MODEL NUMBER	PRODUCT CODE	WIDTH (W)	LENGTH (L)	DEPTH (D)	CLEAR OPENING	
					WIDTH (CW)	LENGTH (CL)
450 x 1140	580216	498	1185	55	450	1140
600 x 1515	580217	648	1560	55	600	1515
600 x 1640	580218	648	1685	55	600	1640
600 x 1765	580219	648	1810	55	600	1765
600 x 1890	580220	648	1935	55	600	1890
600 x 2065	580221	648	2110	55	600	2065
600 x 2240	580222	648	2285	55	600	2240
600 x 2415	580223	648	2460	55	600	2415
750 x 1440	580224	798	1485	55	750	1440
750 x 1590	580225	798	1635	55	750	1590
750 x 1740	580226	798	1785	55	750	1740
750 x 1890	580227	798	1935	55	750	1890
750 x 2040	580228	798	2085	55	750	2040
750 x 2190	580229	798	2235	55	750	2190
750 x 2340	580230	798	2385	55	750	2340
900 x 1440	580231	948	1485	55	900	1440
900 x 1590	580232	948	1635	55	900	1590
900 x 1740	580233	948	1785	55	900	1740
900 x 1890	580234	948	1935	55	900	1890
915 x 2376	580235	963	2421	55	915	2376

#### THREE PART CLASS D: DESIGN LOAD 140 KN

MODEL NUMBER	PRODUCT CODE	WIDTH (W)	LENGTH (L)	DEPTH (D)	CLEAR OPENING	
					WIDTH (CW)	LENGTH (CL)
450 x 1490	580238	530	1560	100	450	1490
600 x 1535	580239	680	1605	100	600	1535
600 x 1670	580240	680	1740	100	600	1670
600 x 1805	580241	680	1875	100	600	1805
600 x 1940	580242	680	2010	100	600	1940
600 x 2070	580243	680	2140	100	600	2070
600 x 2200	580244	680	2270	100	600	2200
600 x 2330	580245	680	2400	100	600	2330
750 x 1490	580246	830	1560	100	750	1490
750 x 1640	580247	830	1710	100	750	1640
750 x 1790	580248	830	1860	100	750	1790
750 x 1940	580249	830	2010	100	750	1940
750 x 2090	580250	830	2160	100	750	2090
750 x 2240	580251	830	2310	100	750	2240
750 x 2390	580252	830	2460	100	750	2390
915 x 1535	580253	995	1605	100	915	1535
915 x 1670	580254	995	1740	100	915	1670
915 x 1805	580255	995	1875	100	915	1805
915 x 1940	580256	995	2010	100	915	1940

NOTE 1. All dimensions are in mm and are approximate



25 YEARS INDUSTRY EXPERIENCE

### DIMENSIONS

